

**CURTIS WHITE COMPANIES, INC.**  
**8132 PARKWAY DRIVE**  
**LEEDS, ALABAMA 35094**  
**(205) 699-2283**  
**SINCE 1953**

**DESIGNER SHOWCASE**  
**PRICING SHEET**

<i>Model</i>	<i>100% Complete</i>	<i>Basement</i>
Colt	117,500.00	23,250.00
Thoroughbred	118,400.00	27,650.00
Virginian	127,700.00	25,150.00
unfinished 2nd floor	120,400.00	25,150.00
Cumberland	120,300.00	26,750.00
Country Gentlemen	125,000.00	27,450.00
School House	133,300.00	25,150.00
Kentucky	133,500.00	25,150.00
American Saddlebred	142,800.00	25,150.00
Cathy's Cottage	142,300.00	30,250.00
Kate's Playhouse	147,300.00	N/A
Stephanie's Dream	150,500.00	included
Cameron's Cove	150,800.00	included
The Cove	153,300.00	included

\*\*\*Note: Above Pricing Includes \$1,000 In Closing Cost When Purchaser Uses One Of Our Approved Mortgage Companies\*\*\*

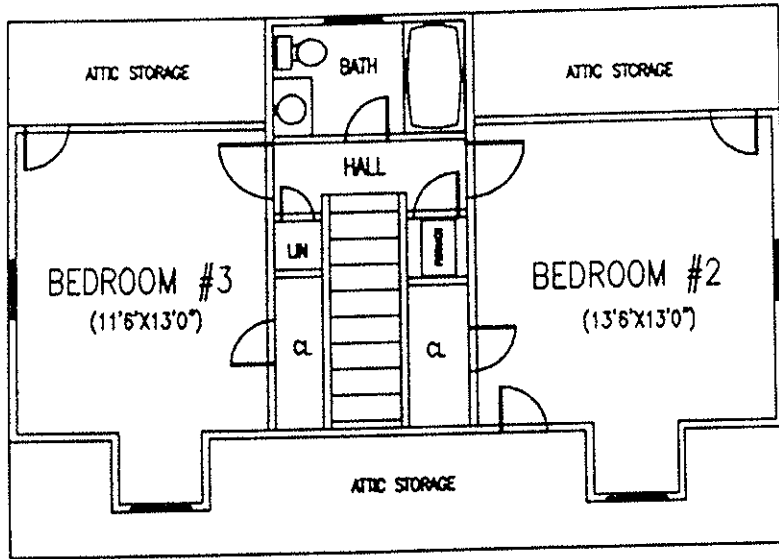
**EXTRAS & OPTIONS FOR 1 1/2 STORY HOMES**

<u>Option</u>	<u>Price</u>
Duel System Heat Pump	3,900.00
22 x 22 Garage w/Unfinished Bonus Room	19,100.00
12 x 24 Garage w/Unfinished Bonus Room	12,900.00

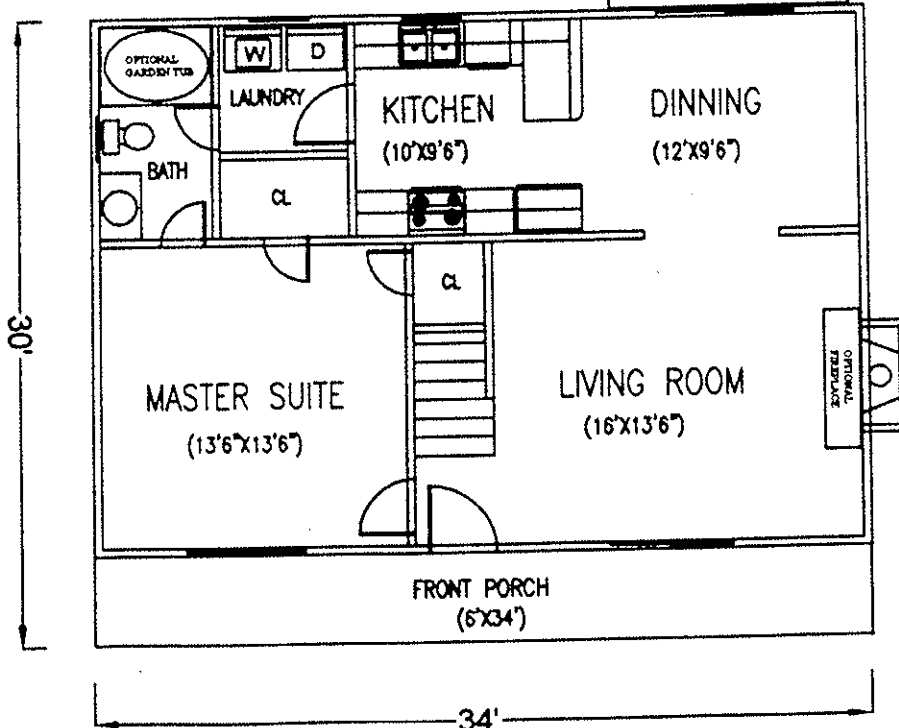
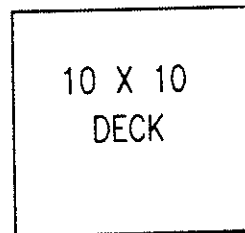
May 6, 2011

Prices Subject To Change Without Notice

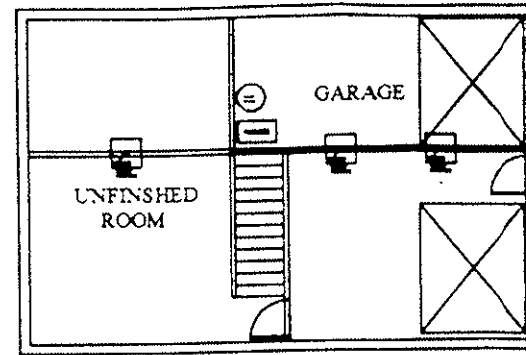
# THE COLT



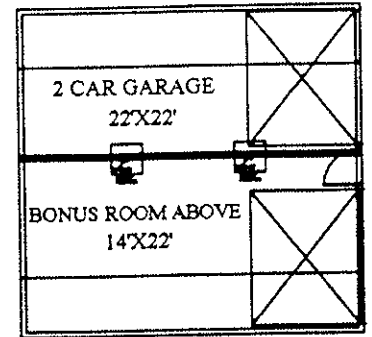
2<sup>ND</sup> FLOOR



1<sup>ST</sup> FLOOR



OPTIONAL BASEMENT PLAN



OPTIONAL 2 CAR GARAGE W/ BONUS ROOM ABOVE

- \* 1350 sqft.
- \* 1.5 STORY
- \* 3 BEDROOMS
- \* 2 BATHS
- \* BKFST BAR
- \* LOTS OF STORAGE
- \* MAIN LEVEL MASTER SUITE
- \* MAIN LEVEL LAUNDRY ROOM
- \* WALK-IN CLOSETS
- \* 2 LARGE BEDROOMS UPSTAIRS
- \* LARGE COUNTRY FRONT PORTCH

\* OPTIONAL FEATURES \*

- \* FIREPLACE
- \* GARDEN TUB WITH SHOWER
- \* 2 CAR GARAGE W/ BONUS ROOM
- \* FULL BASEMENT
- \* FINISHED ROOMS IN BASEMENT



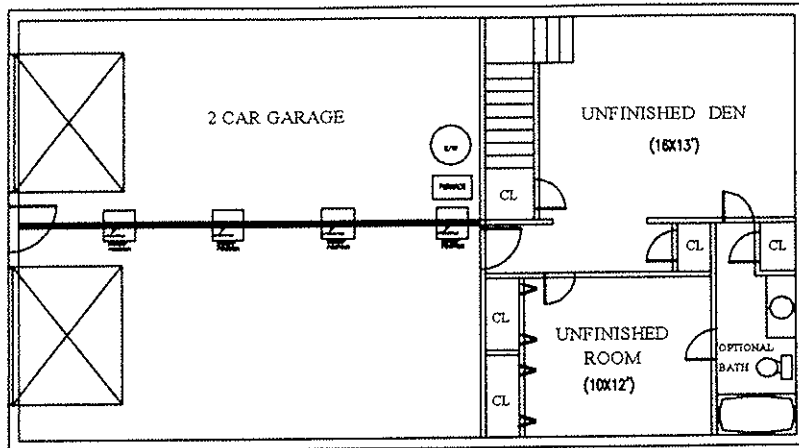
Curtis White Companies, Inc.

Since 1953

824 Parkway Drive S.E., Leeds, Alabama 35094 205-699-2283

\*\*www.curtiswhiteco.com\*\*

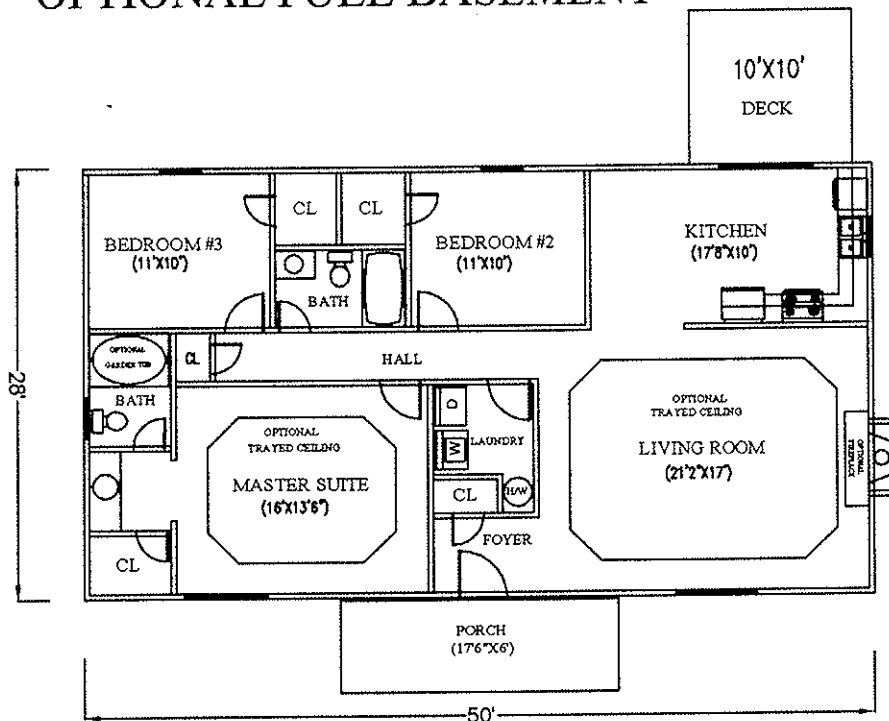
# THOROUGHbred



\* 2002 BUILDER OF THE YEAR \*

- \* ONE LEVEL DESIGN
- \* 1400sqft. MAIN LEVEL
- \* 3 BEDROOMS
- \* 2 BATHS
- \* WALK-IN CLOSETS
- \* EAT- IN KITCHEN
- \* LAUNDRY ROOM
- \* LARGE MASTER SUITE
- \* LARGE COUNTRY PORCH

## OPTIONAL FULL BASEMENT



\* OPTIONAL FEATURES \*

- \* TRAYED CEILINGS
- \* GARDEN TUB
- \* FIREPLACE
- \* FULL BATH IN BASEMENT
- \* FINISHED ROOMS IN BASEMENT

## MAIN FLOOR



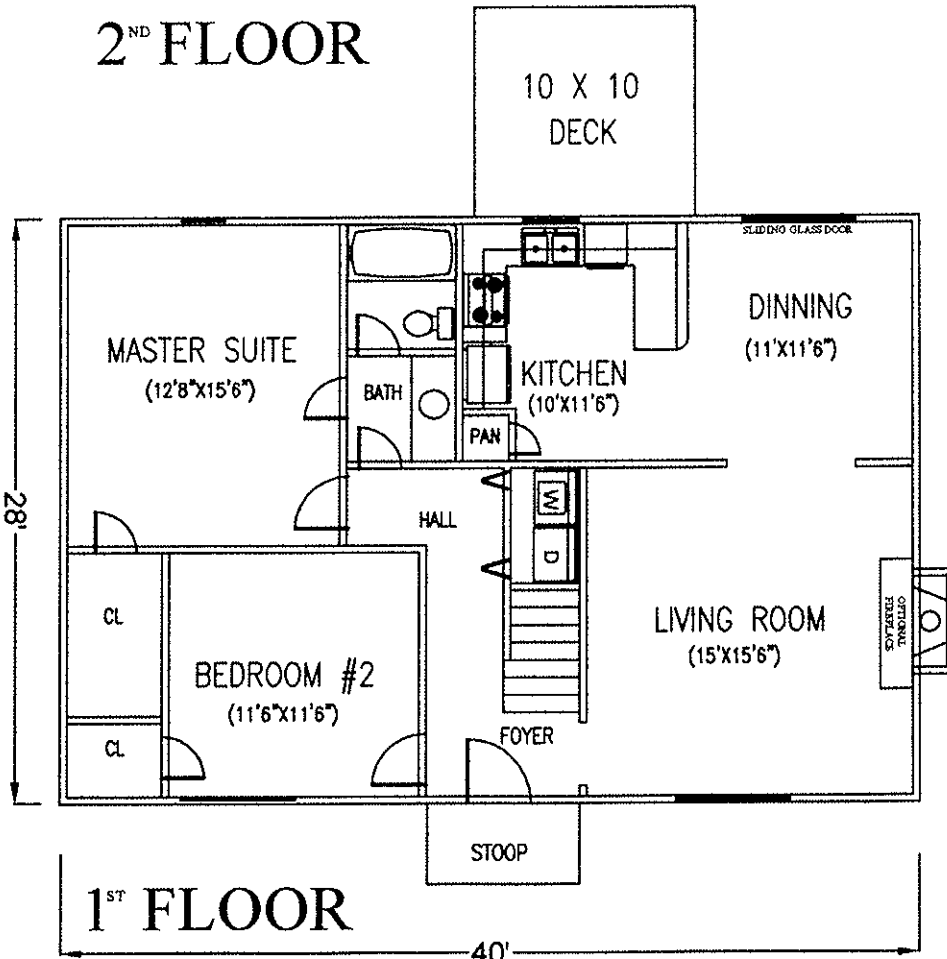
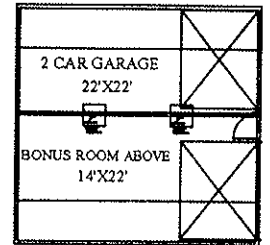
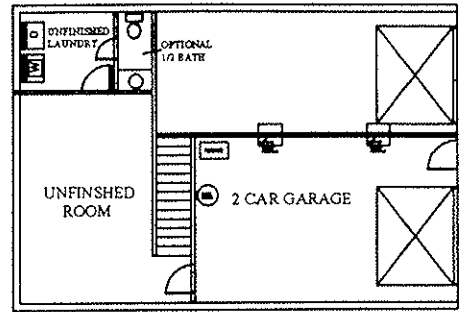
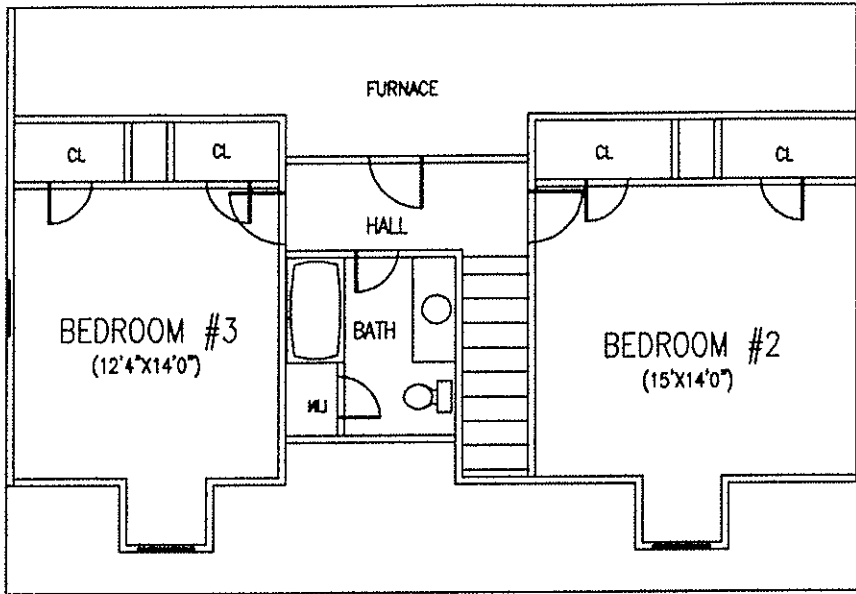
\*\*[www.curtiswhiteco.com](http://www.curtiswhiteco.com)\*\*

Curtis White Companies, Inc.

Since 1953

824 Parkway Drive S.E., Leeds, Alabama 35094 205-699-2283

# VIRGINIAN



- \* 1.5 STORY DESIGN
- \* 1800 sqft.
- \* 1120 sqft. 1st FLOOR
- \* 680sqft. 2nd FLOOR
- \* 4 BEDROOMS
- \* 2 BATHS
- \* FORMAL DINNING ROOM
- \* OPEN KITCHEN W/ BKFT. BAR
- \* MAIN LEVEL MASTER SUITE
- \* MAIN LEVEL 2nd BEDROOM or PARLO
- \* WALK-IN CLOSETS
- \* 2 LARGE BEDROOMS UPSTAIRS

\* OPTIONAL FEATURES \*

- \* FIREPLACE
- \* GARDEN TUB W/ SHOWER
- \* 2 CAR GARAGE W/ BONUS ROOM
- \* FULL BASEMENT W/ FUTURE ROOMS
- \* UPSTAIRS UNFINISHED



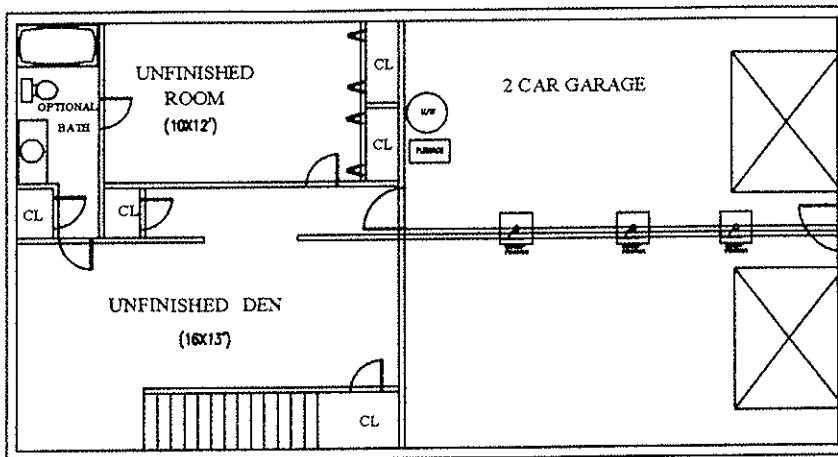
Curtis White Companies, Inc.  
Since 1953

824 Parkway Drive S.E., Leeds, Alabama 35094 205-699-2283



\*\*www.curtiswhiteco.com\*\*

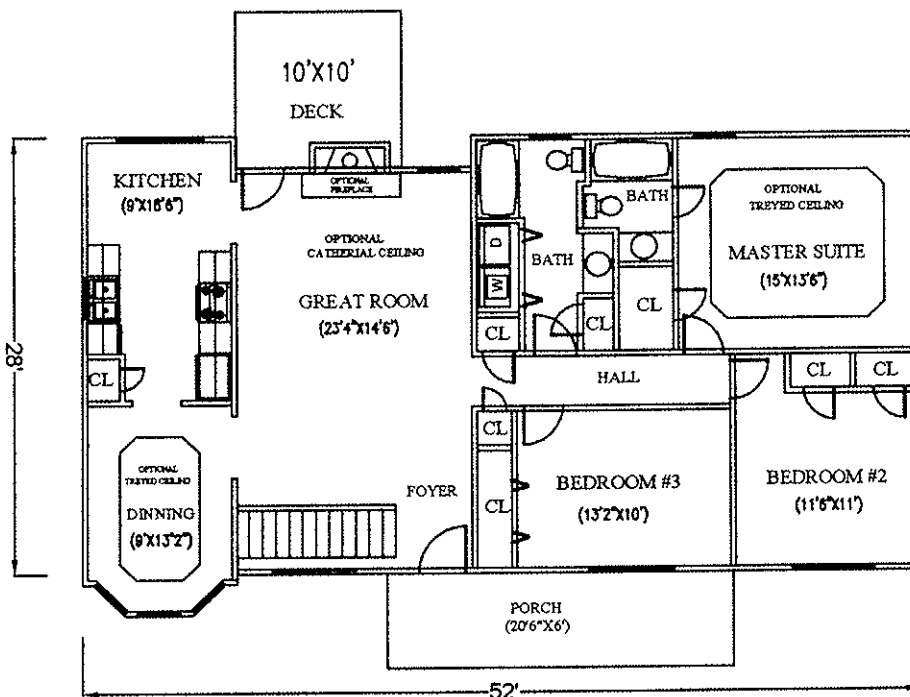
# CUMBERLAND



\* 2002 BUILDER OF THE YEAR \*

## OPTIONAL FULL BASEMENT

- \* ONE LEVEL DESIGN
- \* 1432sqft. MAIN LEVEL
- \* 3 BEDROOMS
- \* 2 BATHS
- \* WALK-IN CLOSETS
- \* EAT- IN KITCHEN
- \* MAIN LEVEL LAUNDRY
- \* LARGE MASTER SUITE
- \* FORMAL DINNING ROOM
- \* LARGE COUNTRY PORCH



\* OPTIONAL FEATURES \*

- \* TREYED CEILINGS
- \* CATHEDRAL CEILING
- \* FIREPLACE
- \* FULL BATH IN BASEMENT
- \* FINISHED ROOMS IN BASEMENT

## MAIN FLOOR

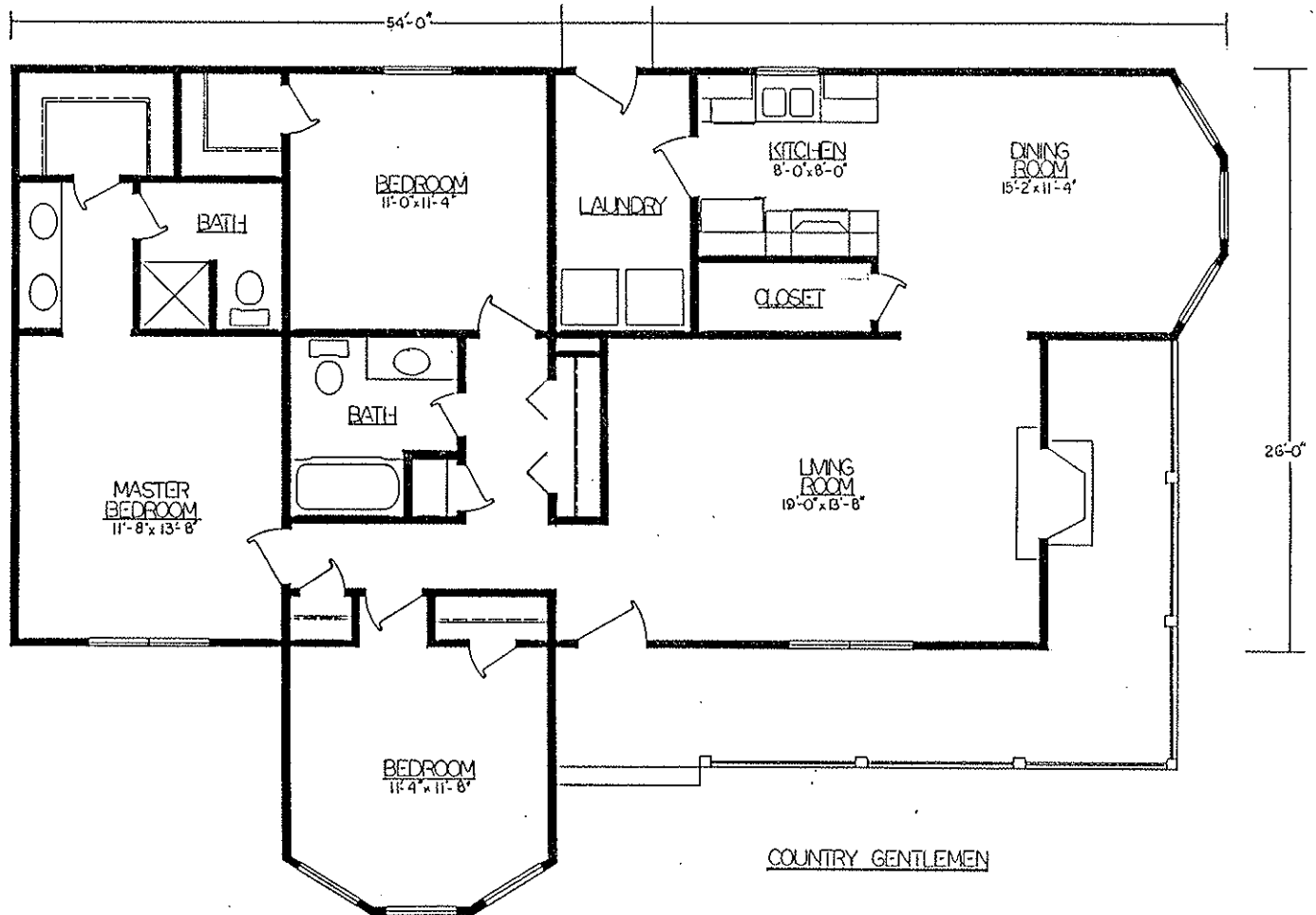
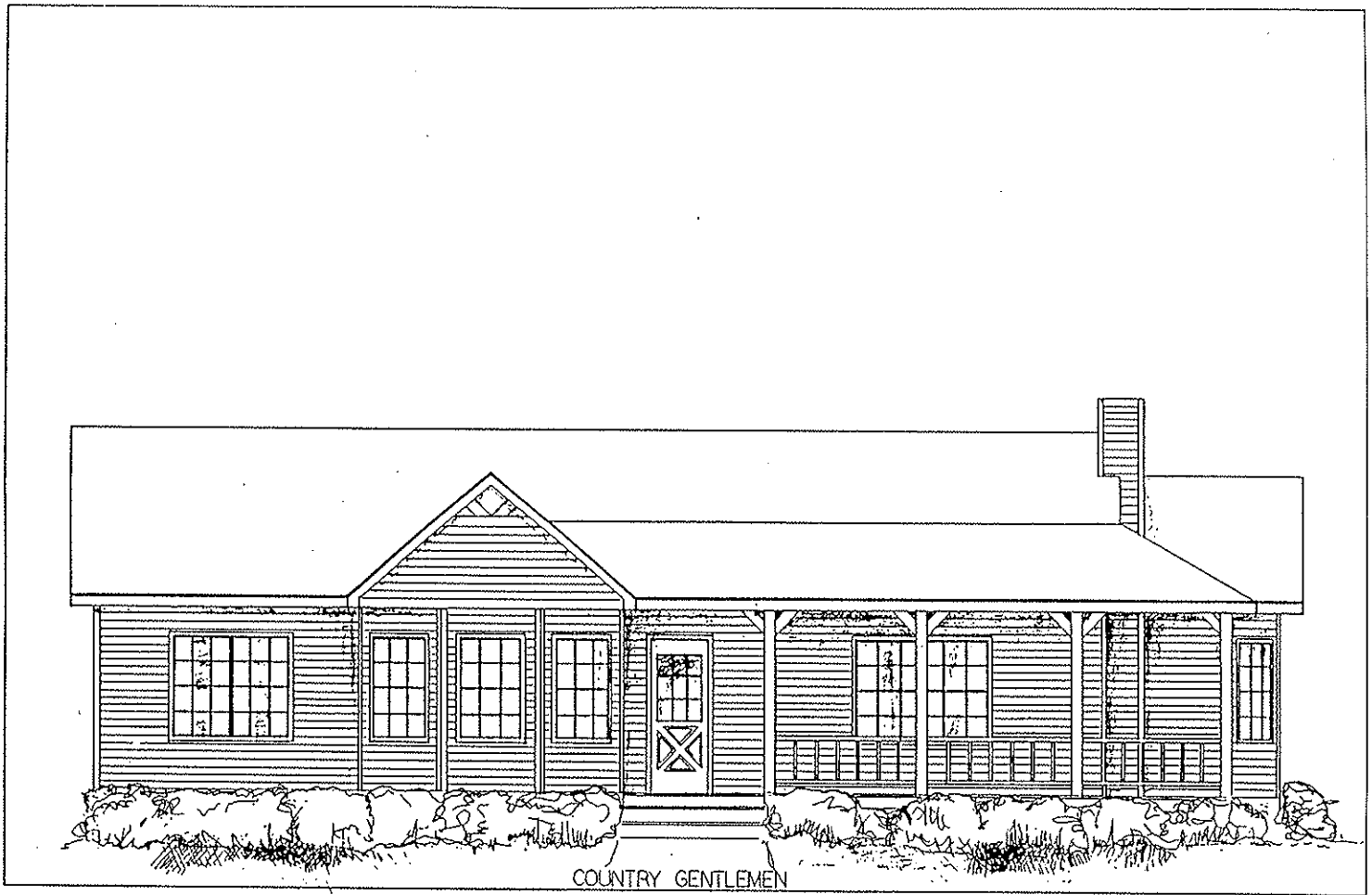
\*\*[www.curtiswhiteco.com](http://www.curtiswhiteco.com)\*\*



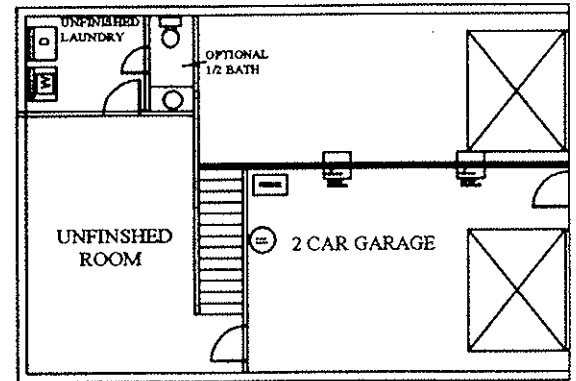
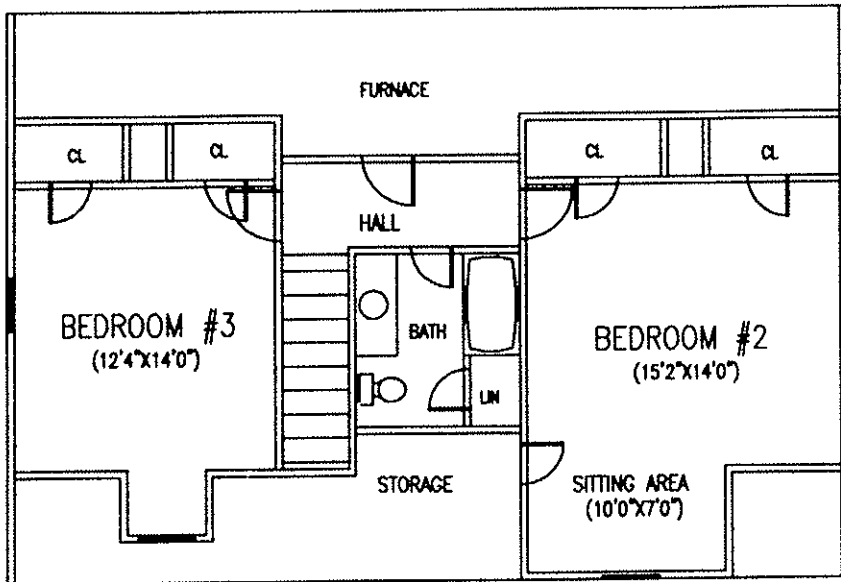
Curtis White Companies, Inc.

Since 1953

824 Parkway Drive S.E., Leeds, Alabama 35094 205-699-2283

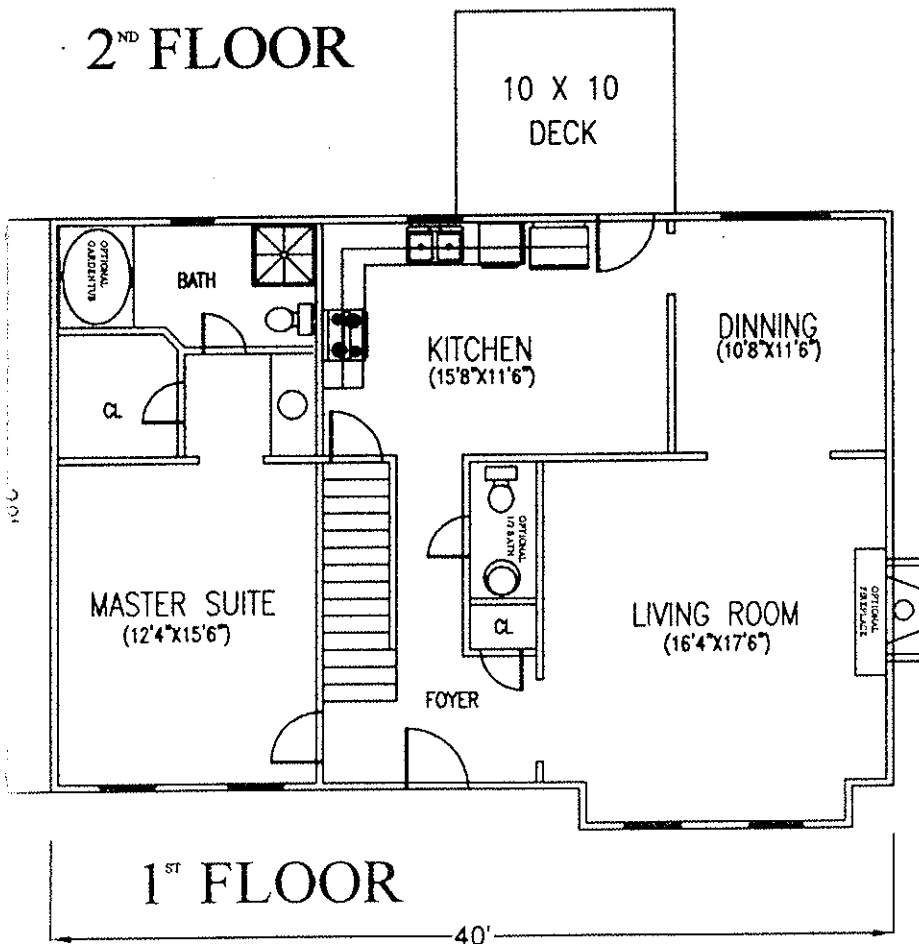


# SCHOOL HOUSE



OPTIONAL BASEMENT PLAN

## 2<sup>ND</sup> FLOOR



## 1<sup>ST</sup> FLOOR

- \* 1890 sqft.
- \* 1.5 STORY
- \* 3 BEDROOMS
- \* 2 BATHS
- \* FORMAL DINNING ROOM
- \* EAT-IN KITCHEN
- \* MAIN LEVEL MASTER SUITE
- \* 2 LARGE BEDROOMS UPSTAIRS
- \* WALK-IN CLOSETS

### OPTIONAL FEATURES

- \* GARDEN TUB WITH SEPERATE SHOWER
- \* 1/2 BATH
- \* FULL BASEMENT
- \* FIREPLACE

\* 2002 BUILDER OF THE YEAR \*



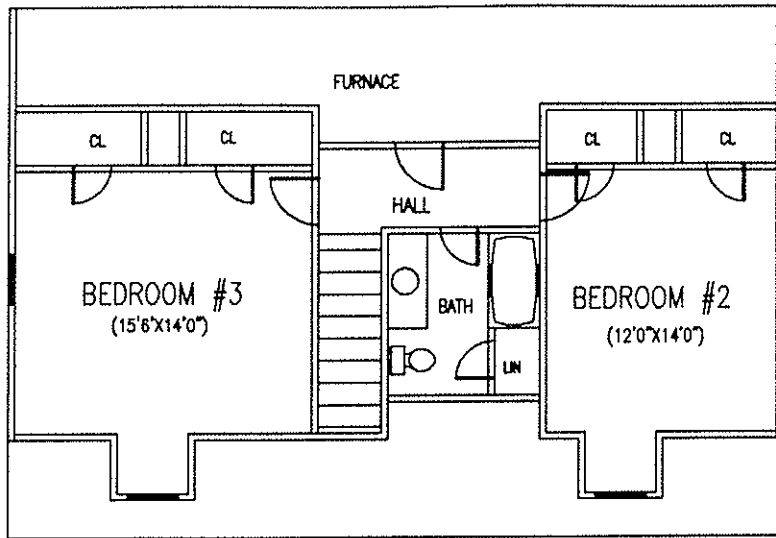
\*\*www.curtiswhiteco.com\*\*

Curtis White Companies, Inc.

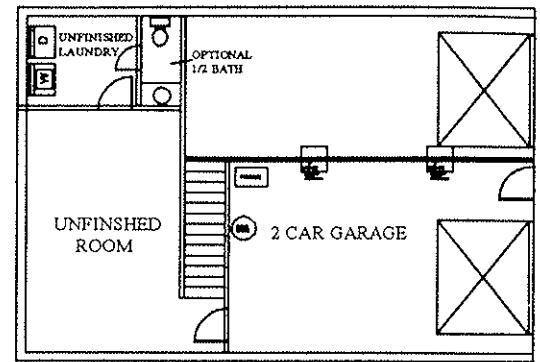
Since 1953

824 Parkway Drive S.E., Leeds, Alabama 35094 205-699-2283

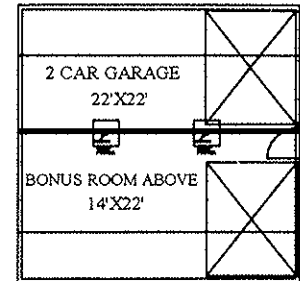
# KENTUCKY



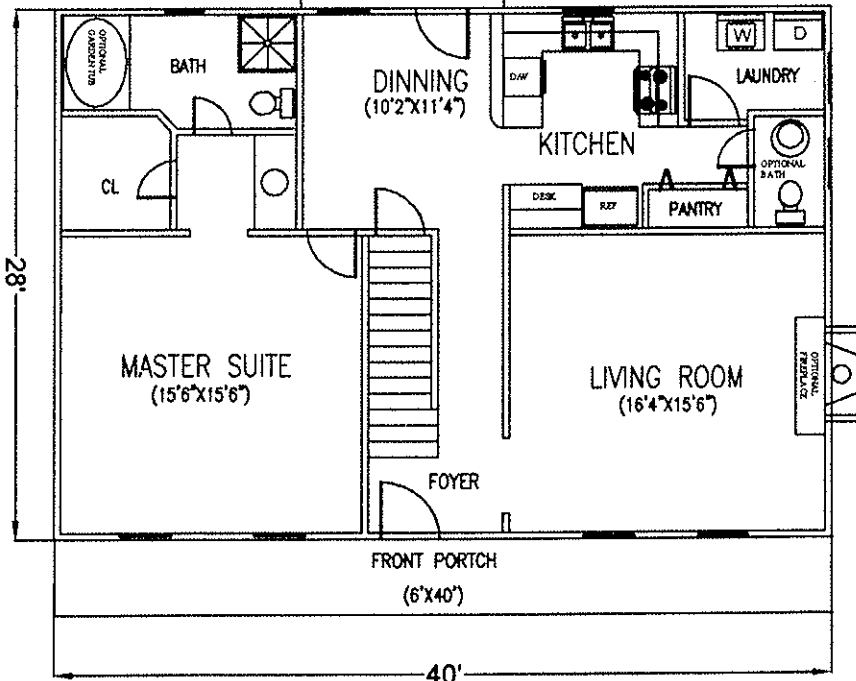
2<sup>ND</sup> FLOOR



OPTIONAL BASEMENT PLAN



OPTIONAL 2 CAR GARAGE  
W/ BONUS ROOM ABOVE



1<sup>ST</sup> FLOOR

- \* 1800 sqft.
- \* 1.5 STORY
- \* 3 BEDROOMS
- \* 2 BATHS
- \* BKFST BAR
- \* BUILT-IN DESK
- \* MAIN LEVEL MASTER SUITE
- \* MAIN LEVEL LAUNDRY ROOM
- \* WALK-IN CLOSETS
- \* 2 LARGE BEDROOMS UPSTAIRS
- \* LARGE COUNTRY FRONT PORTCH

\* OPTIONAL FEATURES \*

- \* FIREPLACE
- \* 1/2 BATH
- \* GARDEN TUB WITH SEPERATE SHOWER
- \* EAT-IN KITCHEN
- \* FULL BASEMENT
- \* FINISHED ROOMS IN BASEMENT
- \* 2 CAR GARAGE W/ BONUS ROOM



\* 2002 BUILDER OF THE YEAR \*

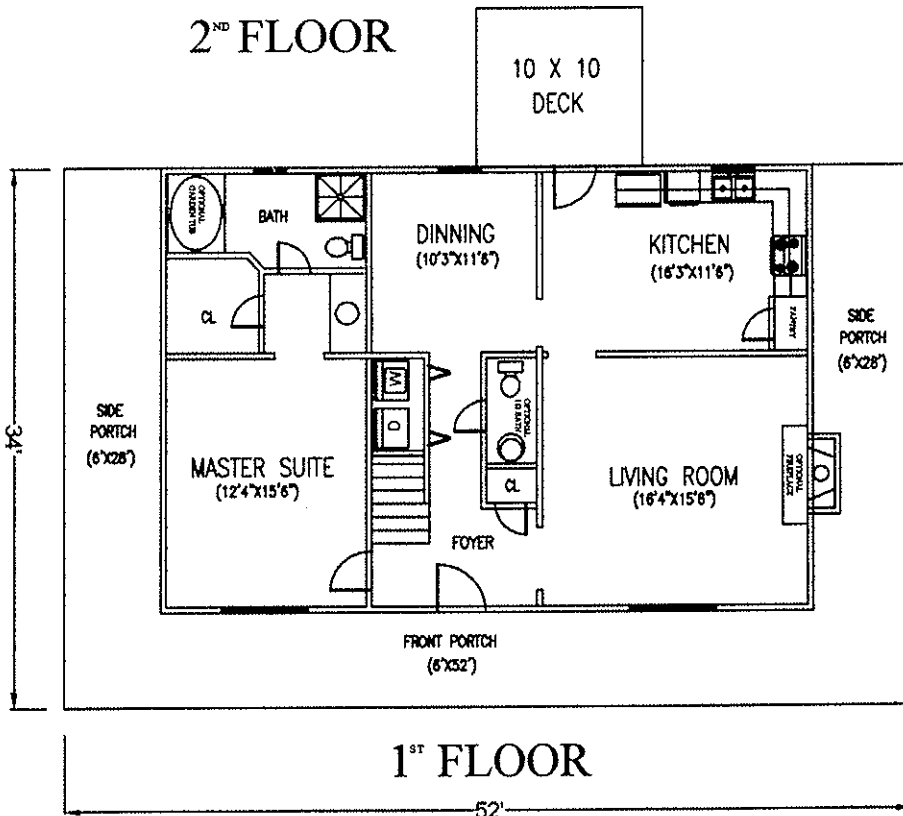
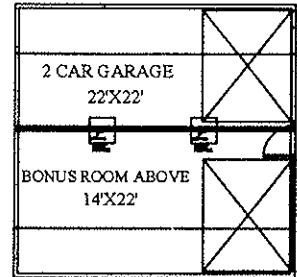
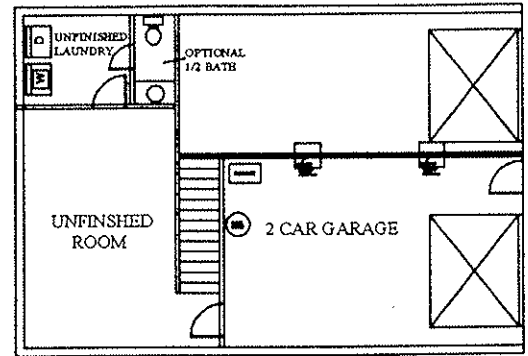
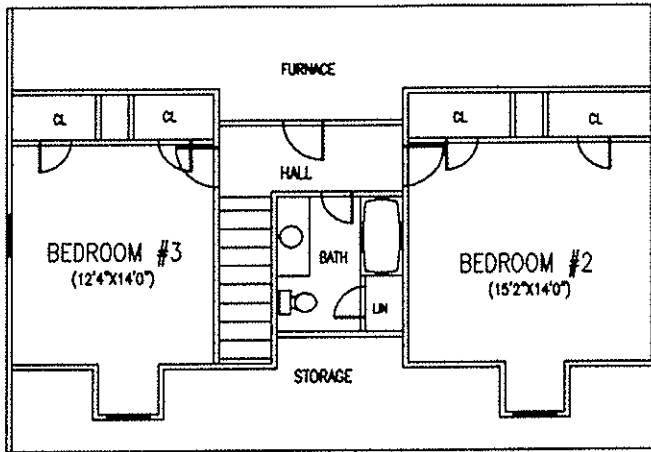
\*\*www.curtiswhiteco.com\*\*



Curtis White Companies, Inc.  
Since 1953

824 Parkway Drive S.E., Leeds, Alabama 35094 205-699-2283

# AMERICAN SADDLEBREED



- \* 1800 sqft.
- \* 1.5 STORY
- \* 3 BEDROOMS
- \* 2 BATHS
- \* FORMAL DINNING ROOM
- \* EAT-IN KITCHEN
- \* MAIN LEVEL MASTER SUITE
- \* WALK-IN CLOSETS
- \* 2 LARGE BEDROOMS UPSTAIRS
- \* WRAP AROUND PORTCH

**\* OPTIONAL FEATURES \***

- \* FIREPLACE
- \* 1/2 BATH
- \* GARDEN TUB W/ SEPRATE SHOWER
- \* FULL BASEMENT
- \* FINISHED ROOMS IN BASEMENT
- \* 2 CAR GARAGE W/ BONUS ROOM



\* 2002 BUILDER OF THE YEAR \*

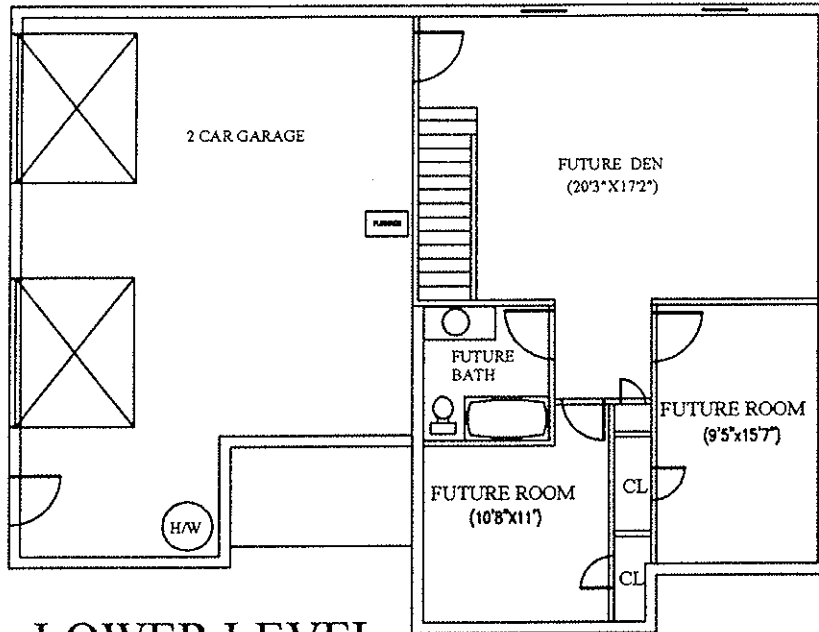
\*\* [www.curtiswhiteco.com](http://www.curtiswhiteco.com) \*\*



Curtis White Companies, Inc.  
Since 1953

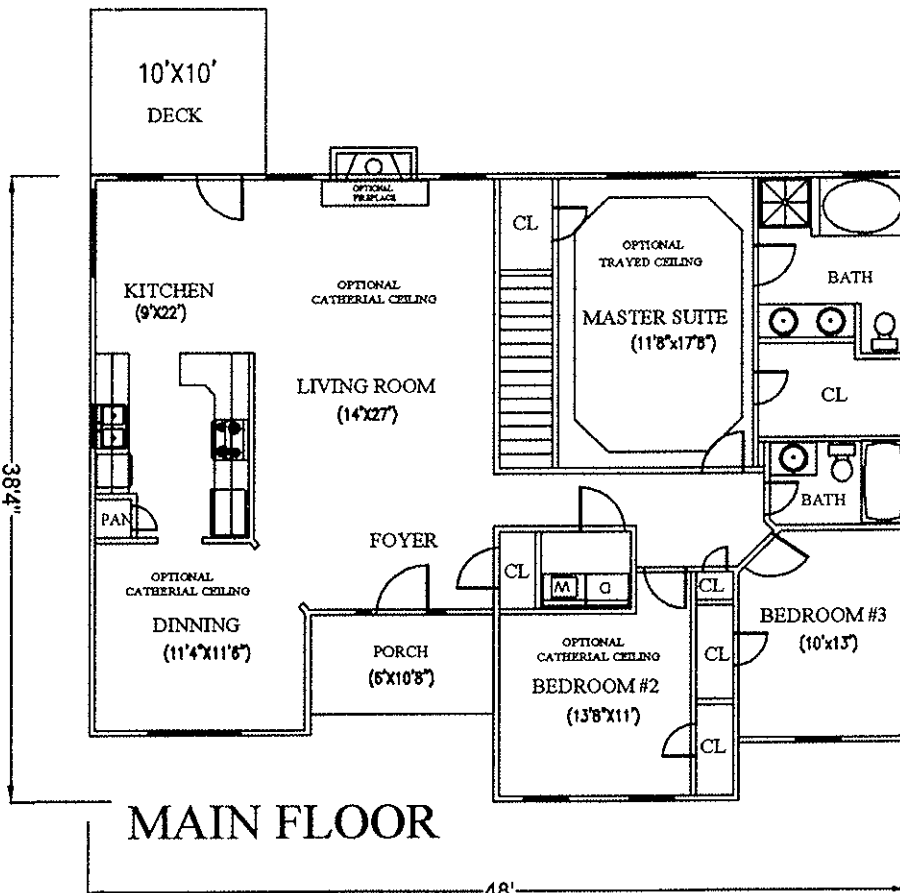
824 Parkway Drive S.E., Leeds, Alabama 35094 205-699-2283

# CATHY'S COTTAGE



**LOWER LEVEL**

**\* 2002 BUILDER OF THE YEAR \***



**MAIN FLOOR**

- \* ONE LEVEL WITH OPTIONAL FULL BASEMENT
- \* 2403sqft.
- \* 1640sqft. FINISHED
- \* 763 sqft. UNFINISHED (BASEMENT)
- \* 3 BEDROOMS
- \* 2 BATHS
- \* GARDEN TUB WITH SEPERATE SHOWER
- \* BRKFT. BAR
- \* LAUNDRY ROOM
- \* LARGE MASTER SUITE
- \* WALK-IN CLOSET

**\* OPTIONAL FEATURES \***

- \* TRAYED CEILING
- \* CATHIERAL CEILING
- \* FIREPLACE
- \* FULL BATH IN BASEMENT
- \* FINISHED ROOMS IN BASEMENT



**\*\*www.curtiswhiteco.com\*\***

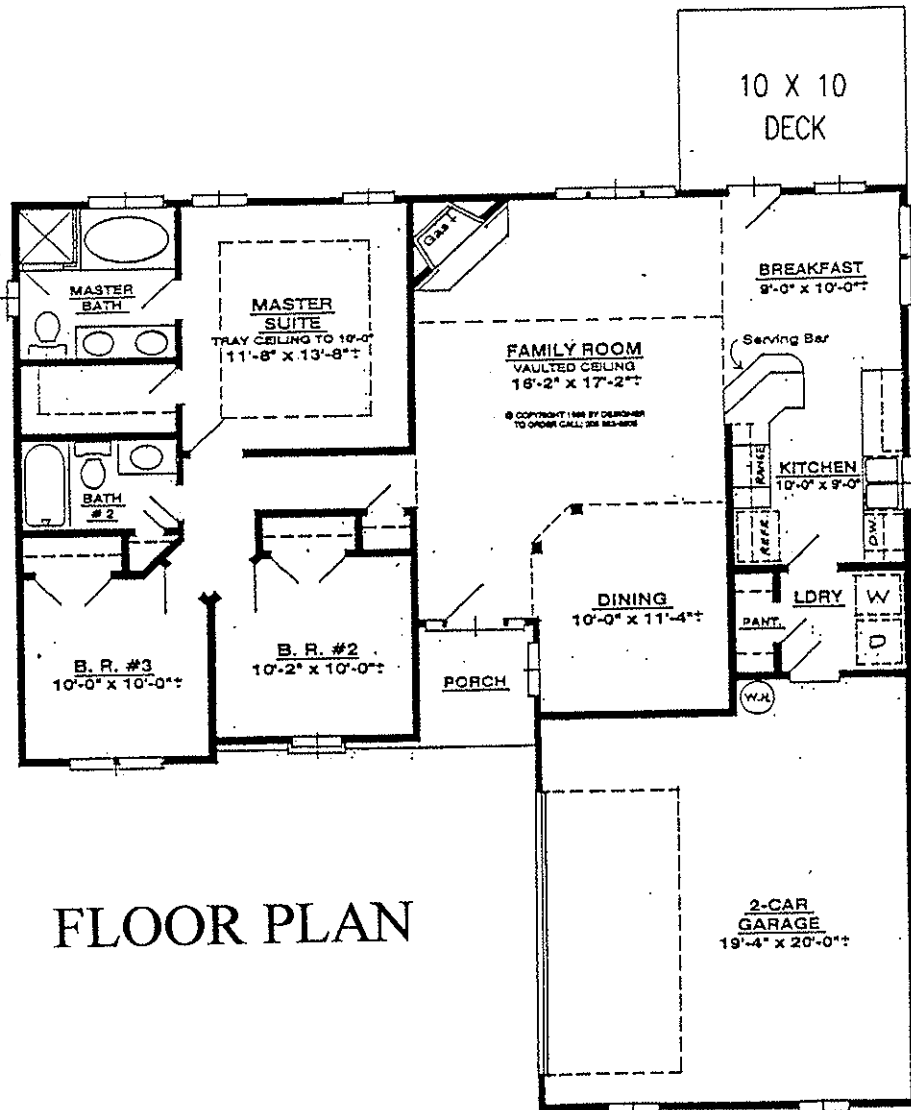
**Curtis White Companies, Inc.**  
Since 1953

824 Parkway Drive S.E., Leeds, Alabama 35094 205-699-2283

# KATE'S PLAYHOUSE



\* 2002 BUILDER OF THE YEAR \*



FLOOR PLAN

- \* 1375sqft.
- \* 1 STORY
- \* 3 BEDROOMS
- \* 2 BATHS
- \* FORMAL DINNING ROOM
- \* EAT-IN KITCHEN
- \* BRKFST. BAR
- \* GARDEN TUB WITH SEPERATE SHOW
- \* WALK-IN CLOSETS
- \* LARGE MASTER SUITE
- \* 2 CAR GARAGE

\* OPTIONAL FEATURES \*

- \* FIREPLACE
- \* TRAYED CEILING
- \* CATHIERIAL CEILING



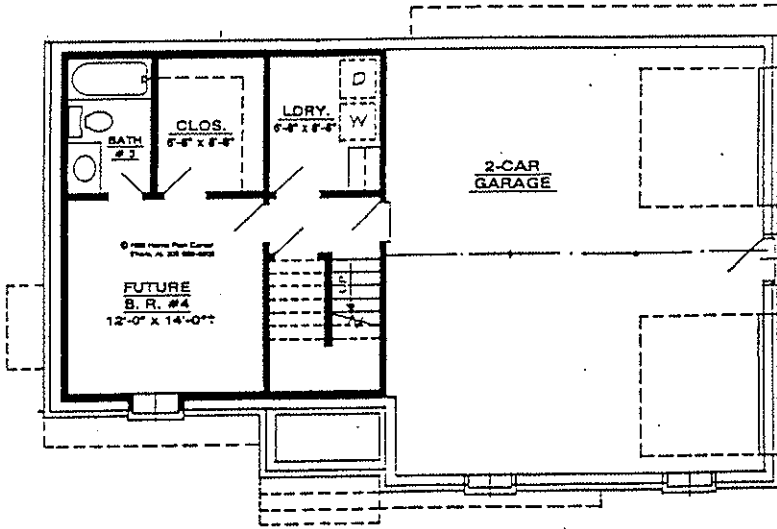
\*\*www.curtiswhiteco.com\*\*

Curtis White Companies, Inc.

Since 1953

824 Parkway Drive S.E., Leeds, Alabama 35094 205-699-2283

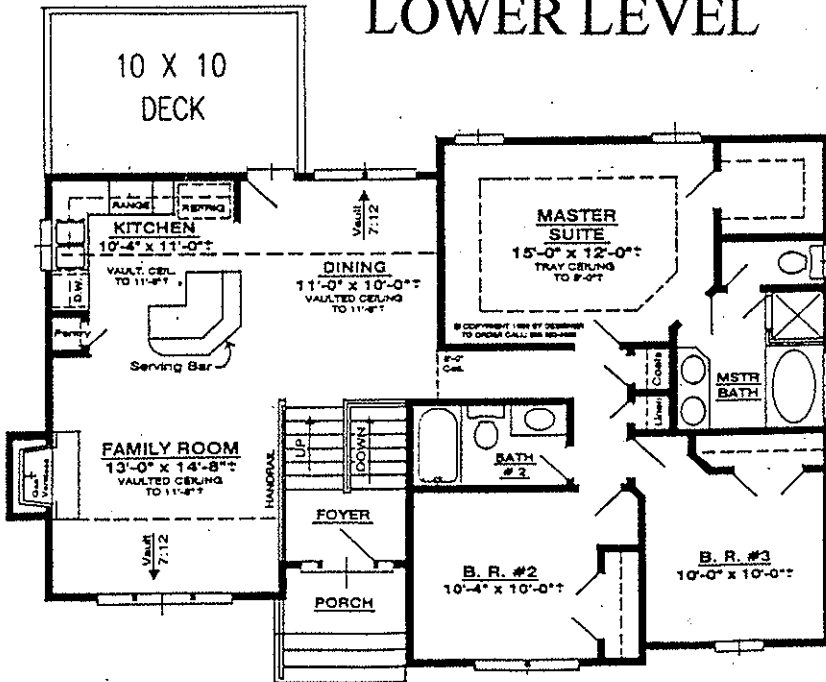
# STEPHANIE'S DREAM



LOWER LEVEL

- \* SPLIT FOYER DESIGN
- \* 1672sqft.
- \* 1358sqft. FINISHED
- \* 314sqft. UNFINISHED
- \* 3 BEDROOMS
- \* 2 BATHS
- \* GARDEN TUB WITH SEPERATE SHOWER
- \* BRKFT. ISLAND
- \* LAUNDRY ROOM
- \* LARGE MASTER SUITE
- \* WALK-IN CLOSET

\* OPTIONAL FEATURES \*



MAIN FLOOR

- \* TRAYED CEILING
- \* CATERIAL CEILING
- \* FIREPLACE
- \* FULL BATH IN BASEMENT
- \* FINISHED ROOMS IN BASEMENT



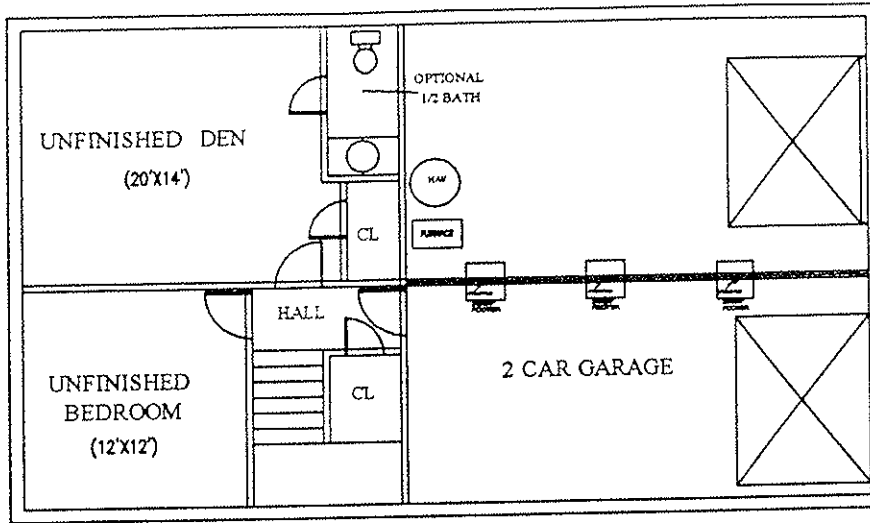
\*\*www.curtiswhiteco.com\*\*

Curtis White Companies, Inc.

Since 1953

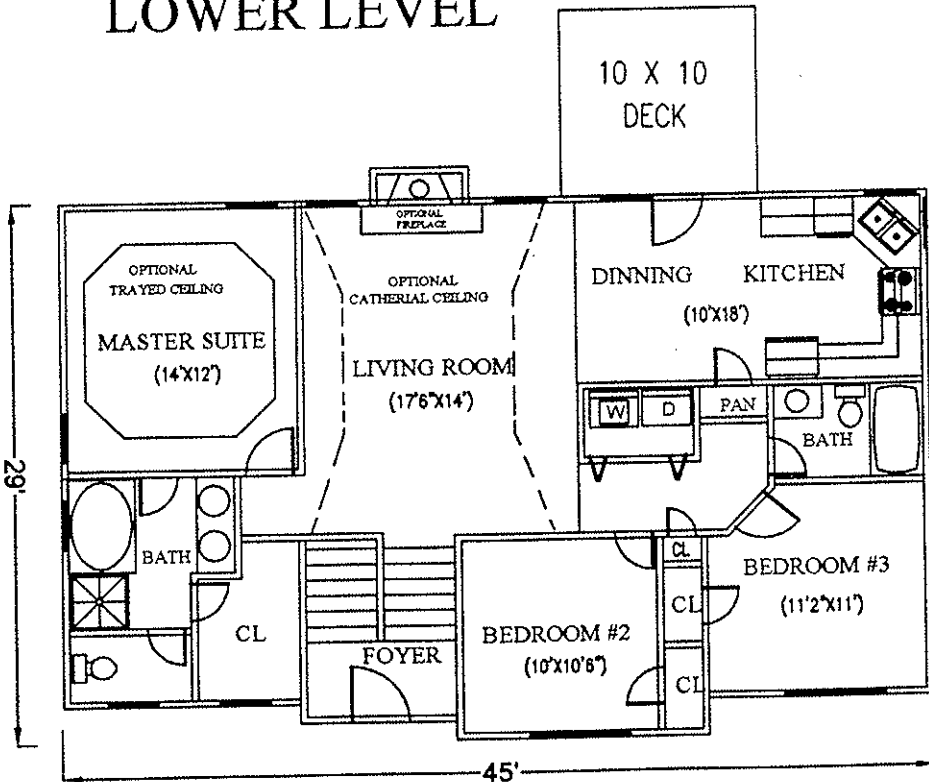
824 Parkway Drive S.E., Leeds, Alabama 35094 205-699-2283

# THE COVE



- \* SPLIT FOYER DESIGN
- \* 1748 sqft.
- \* 1295 sqft. FINISHED
- \* 453 sqft. UNFINISHED
- \* 3 BEDROOMS
- \* 2 BATHS
- \* GARDEN TUB WITH SEPERATE SHC
- \* EAT-IN KITCHEN
- \* MAIN LEVEL LAUNDRY
- \* SPLIT BEDROOMS
- \* WALK-IN CLOSET

## LOWER LEVEL



\* OPTIONAL FEATURES \*

- \* TRAYED CEILING
- \* CATHETERIAL CEILING
- \* FIREPLACE
- \* 1/2 BATH IN BASEMENT
- \* FINISHED ROOMS IN BASEMENT

## MAIN FLOOR



\*\*[www.curtiswhiteco.com](http://www.curtiswhiteco.com)\*\*

**Curtis White Companies, Inc.**

Since 1953

824 Parkway Drive S.E., Leeds, Alabama 35094 205-699-2